

# Annual **REPORT** **2025**



[www.spreadlife.org](http://www.spreadlife.org)



Spread

Life

To Our <b>Friends &amp; Partners</b>	<b>1</b>
<b>2025</b> in a Glance	<b>3</b>
<b>Milestones</b> in 2025	<b>5</b>
Our <b>Team</b>	<b>6</b>
Our <b>Programs</b>	<b>10</b>
<b>Transparency &amp; Governance</b>	<b>13</b>
<b>Growth &amp; Sustainability</b>	<b>14</b>
<b>Events</b>	<b>15</b>
<b>Financials</b>	<b>18</b>

# Table of **CONTENTS**

# To Our Friends & Partners



*"Carry each other's burdens, and in this way you will fulfill the law of Christ."*

**Galatians 6:2**

As we reflect on the year 2025, we are deeply grateful for God's guidance and for the faithful support of our community. Despite the ongoing economic challenges in Lebanon, Spread Life remained committed to its mission of planting God's word and love in every household we serve.

Lebanon continued to face significant economic pressure throughout the year. Although inflation slowed compared to previous crisis years, the country still recorded an **average annual inflation rate of approximately 14.8% in 2025**, increasing the cost of basic necessities such as food, medication, and transportation. For the vulnerable families we serve, this reality has made daily life even more difficult.

In response to these challenges, Spread Life continued to expand its outreach. By the grace of God and the generosity of our supporters, we were able to serve, on a monthly basis, **1,100 families across Lebanon in 2025**, providing medical assistance, food support, educational opportunities, and spiritual encouragement.

This year was also particularly meaningful for our organization as we celebrated the **10th anniversary of Spread Life**. In October, we gathered friends and supporters to reflect on a decade of service and to introduce new people to the mission of Spread Life. Over the past ten years, what began as simple visits to families has grown into a vibrant community dedicated to serving with compassion, dignity, and faith.

# To Our Friends & Partners



Recognizing the importance of caring not only for physical needs but also for emotional well-being, we launched a new initiative in 2025 called the **Kazdoura Program**. Through this program, twice each month we take elderly and vulnerable individuals on outings to Christian spiritual sites such as Saint Charbel and Saint Rafka. These visits are followed by a shared meal and fellowship, offering participants a moment of joy, connection, and dignity away from the isolation many experiences at home.

During the year, we also expanded our mission by welcoming new families in **Tripoli**, extending our reach to communities with growing needs.

We were also blessed to strengthen the sustainability of our ministry. Through the proceeds generated over the past five years from Spread Life's developmental initiatives, including **Spread Wine, Spread Honey, and consultancy services**, we were able to acquire a real estate property that will now generate rental income to support our charitable work.

Additionally, a new collaboration with a pharmacy supplier has helped secure a more reliable source of medications for the families we serve.

Looking toward the future, we continue to build new ways for our community to participate in this mission. In December 2025, we began preparing a new initiative to be launched in 2026 that will encourage **small donors and young people** to become part of the Spread Life mission.

As we move forward, we remain deeply thankful to our donors, volunteers, and partners who make this work possible. Your support allows us not only to provide assistance but also to remind every family we serve that they are loved, remembered, and never alone.

Together, we will continue to **Spread Life**.

**Elie Raheb Khallo**  
Executive Director



School of  
Pharmacy



# 2025 In a Glance

*"Freely you have received; freely give."* Matthew 10:8

## Families Served

**1,065 families** served across Lebanon by the end of 2025.



## Medical Program

- **475 patients** receiving chronic medications.
- **5,638 medicine bags** distributed during the year.
- **1,242 laboratory & radiology tests** supported for patients in need.

## Food Support

- **11,467 hot meals** delivered through the Kitchen Program.
- **783 pantry boxes** distributed to families.



## Education Program

**73 students** received educational subsidies to support their studies.

# 2025 In a Glance



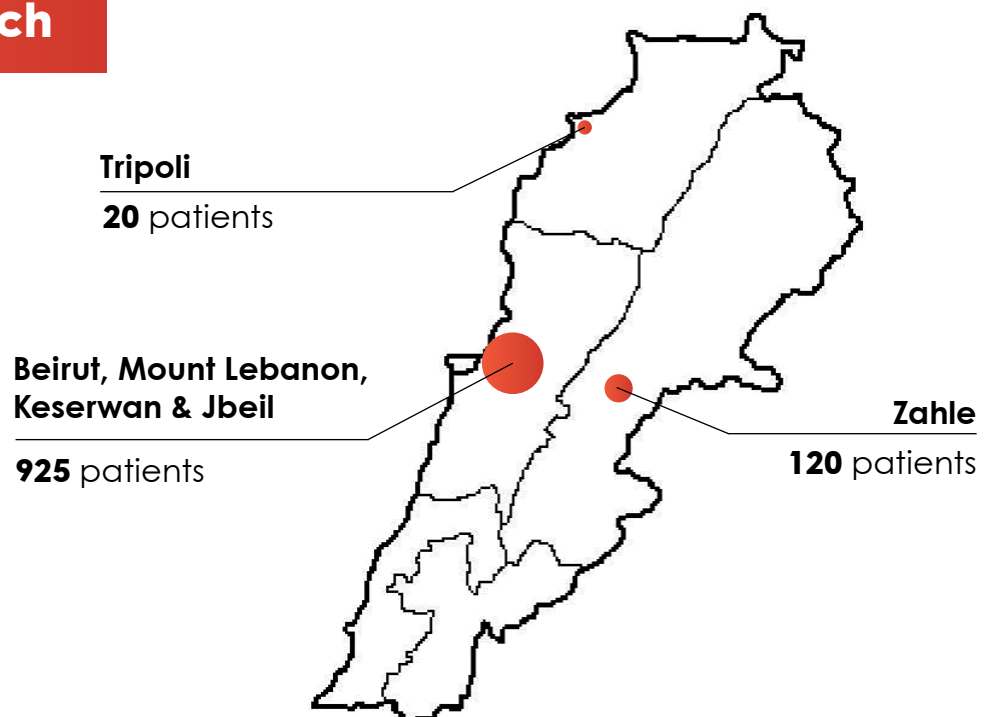
## Kazdoura Program (New)

- **12 road trips** organized during the year.
- **7 elderly beneficiaries per trip**, offering fellowship, spiritual visits to Christian sites such as Saint Charbel and Saint Rafka, and a shared meal.

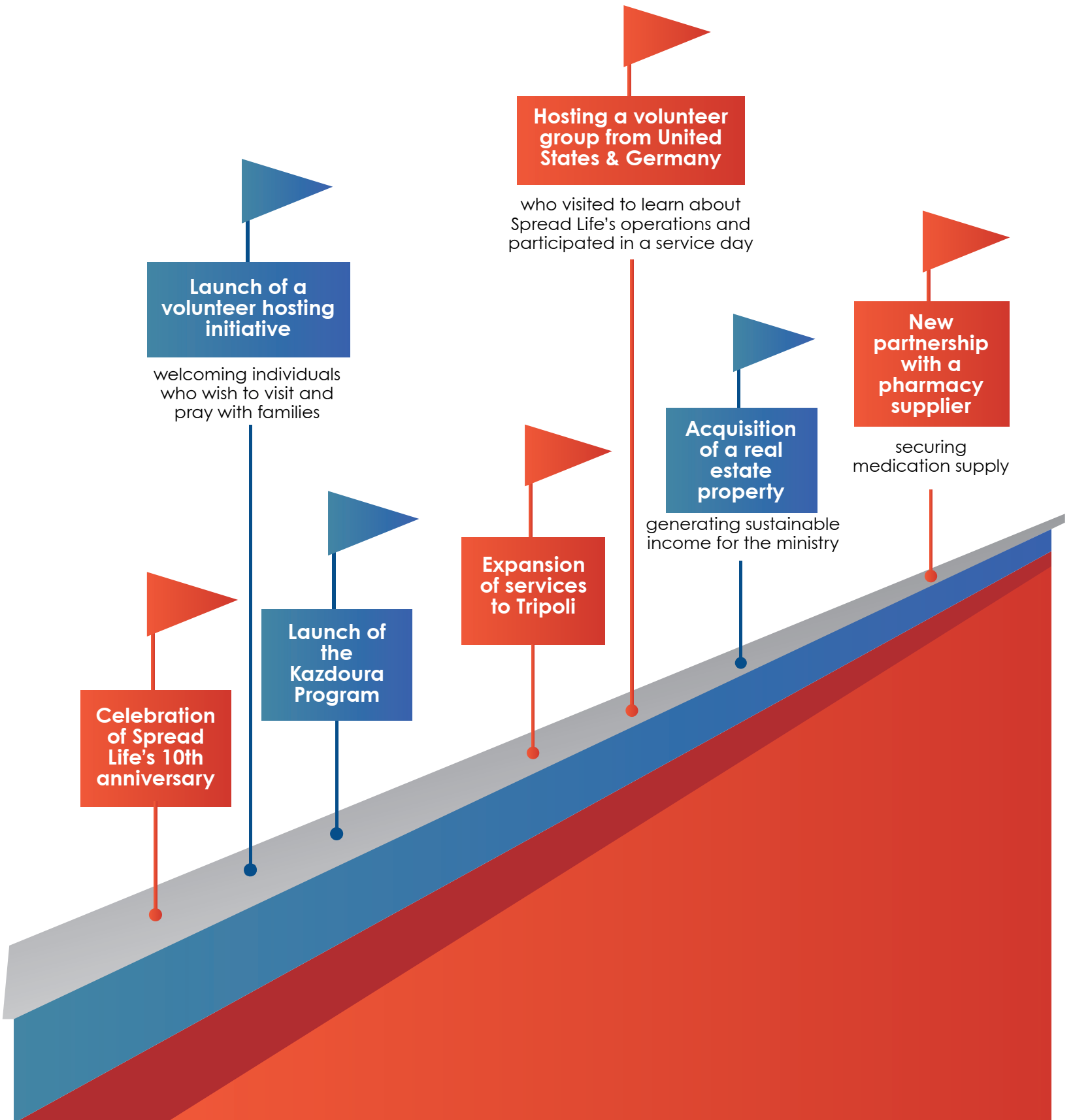
## Spiritual Mission

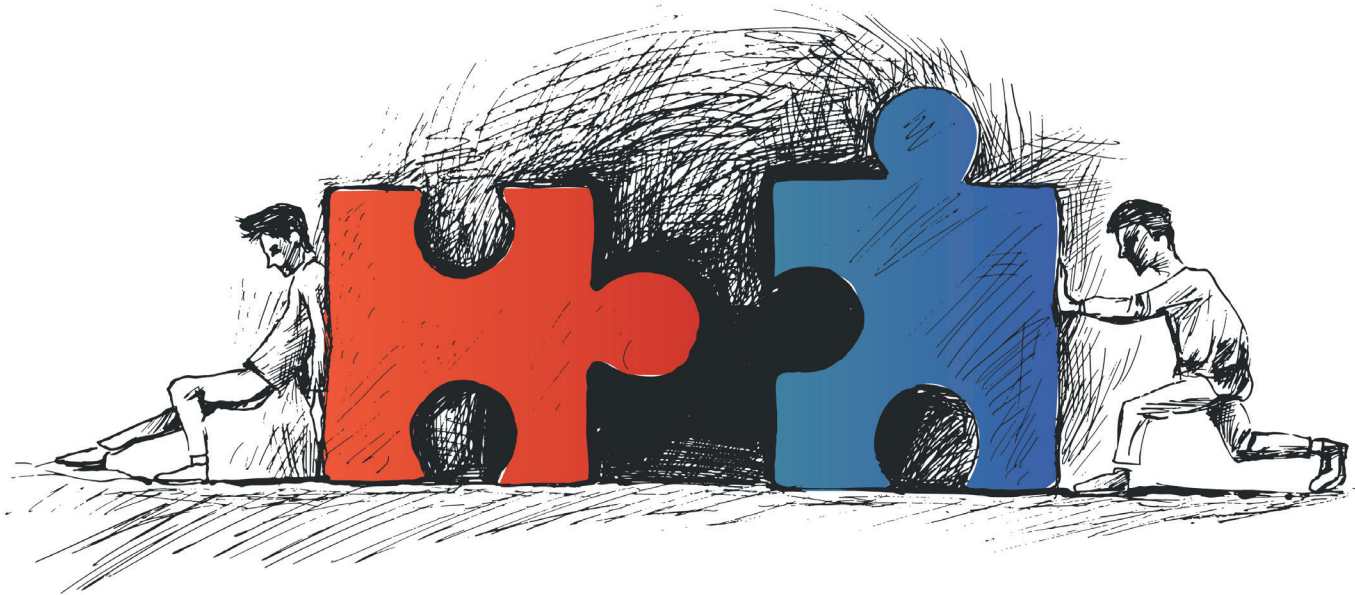
- **11 Bet Tarbitho – Spread Life monthly prayer meetings** organized.
- Transportation was provided for families through Spread Life buses to allow them to participate in worship, prayer, and fellowship.

## Geographic Reach



# Milestones 2025 in





Special thanks to ShiBfeed Christian Organization, which managed all our social media pages and video production. They graciously opened their studio and offered their skilled team throughout the year to produce videos for our monthly meetings and other projects.

**We proudly present our team:**

## Board Members



**Elie Raheb-Khallo**



**Dr. Jad Mrad**



**Mary Kello**



**Julien Jalkh**



**Mikhael Dunya**

# Our Team

7

## Management & Administrative Team



**Elie Raheb-Khallo**  
Executive Director



**Mary Kello**  
Financial Manager



**Viviane Moukhtar**  
Operational Administration



**Rod Chami**  
Web & Social Media



**Mireille Murr**  
Chief Pharmacist



**Sandra Kiklikian**  
Pharmacist

## Account & Field Officers



**George Makdisi**  
Field Service  
Coordinator



**Hani Moukhtar**  
Account Officer



**Jack Dolmayeh**  
Account Officer



**Steve Bechara**  
Account Officer



**Fr. Charbel Bahhy**  
Account Officer



**Viviane Makadssi**  
Account Officer



**Elie Zino**  
Account Officer



**Adel Syriani**  
Field Officer



**Joseph Zino**  
Field Officer



**Malek Shaker**  
Field Officer

# Our Team

## Kitchen Program



**Amal Chamii**  
Chef



**Simon Chamii**  
Assistant Chef



**Chakeh Hajjar Saadeh**  
Dietitian

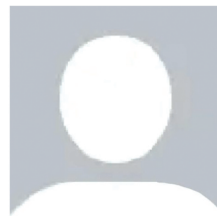


**Issam Eid**  
Transportation Services

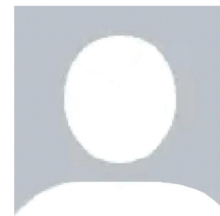
## Pantry Program



**Georges Abou Sleiman**  
Transportation Services



**Anonymous Servant**  
Pantry Program Coordinator



**Anonymous Servant**  
Pantry Program Assistant

## Educational Program



**Mikhael Dunya**  
Program Coordinator



**Sara Chemali**  
After-School  
Project Supervisor



**Bahjat Babi**  
Account Officer



**Fadi Abou Assaly**  
Career Support Officer

# Our Team

## After-School Team



Christine Dolmayeh | Nancy Hanna | Joe Moheb | Marsela Barsoum  
George Koko | Jonathan Jajan | Marc Moukhtar (Camera Shy)

## Media



**ShiBfeed  
Organization**  
Videography



**Walid Azar**  
Photographer

## Consultants



**Souad El Mayss**  
Legal Consultant

# Our Programs

## Medical Program

The Medical Program remains the core pillar of Spread Life's mission. Through this program, we support patients suffering from chronic illnesses by providing essential medications on a regular basis. Our volunteers deliver medicine directly to families during monthly visits, offering not only medical assistance but also prayer, encouragement, and personal support.

In addition to medication support, Spread Life assists families with laboratory tests, radiology services, and other medical needs, helping patients access healthcare they would otherwise struggle to afford. This program reflects our belief that caring for the sick is both a humanitarian responsibility and a spiritual calling.

In 2025, Spread Life continued to expand this program through a new partnership with a pharmacy supplier, ensuring a more reliable source of medication for the families we serve.

## Education Program

Spread Life believes that education is one of the most powerful tools for breaking the cycle of poverty. Through the Education Program, we support students from underprivileged families by subsidizing their school or university tuition and encouraging them to pursue their studies with confidence.

Beyond financial assistance, the program aims to empower young people by helping them build a stable future for themselves and their families. Over the years, several students supported through this program have successfully graduated and entered the workforce, becoming an encouraging testimony to the long-term impact of education.



# Our Programs

## Pantry Program

Through the Pantry Program, Spread Life provides food boxes containing essential household groceries to families facing economic hardship. These food boxes help relieve the burden of rising food prices and ensure that families have access to basic nutrition.

Food boxes are distributed regularly to families most in need, particularly those struggling with unemployment, illness, or financial instability. This program continues to be an important way to support families during Lebanon's ongoing economic crisis.

## Kitchen Program

The Kitchen Program was developed to serve families who are unable to prepare meals on their own due to financial or health-related challenges. Through this initiative, Spread Life prepares and delivers daily hot meals to families in need.

These meals are prepared with care and delivered directly to households, ensuring that vulnerable individuals, especially elderly and sick beneficiaries, receive warm and nutritious food on a consistent basis. The program has become an essential source of support for many families who rely on it for their daily nourishment.



## Spiritual Mission

At the heart of Spread Life's work is the belief that true service extends beyond material assistance. During family visits and community gatherings, volunteers take time to pray with families, offer spiritual encouragement, and share God's word.

In addition to home visits, Spread Life organizes monthly Bet Tarbitho – Spread Life prayer meetings, where families are invited to gather for prayer, fellowship, and worship. Transportation is provided through Spread Life buses so that beneficiaries can participate regardless of their financial or mobility limitations.

These gatherings strengthen the sense of community and remind families that they are not alone in their struggles.

## Kazdoura Program

The Kazdoura Program was launched to support the emotional and social well-being of elderly individuals who often experience isolation and limited opportunities to leave their homes. Through this initiative, Spread Life organizes outings that allow participants to enjoy fellowship, spiritual visits, and shared meals in a welcoming environment.

Spread Life volunteers identify elderly beneficiaries who would benefit from these outings and coordinate with them to confirm participation. Each Kazdoura trip is carefully organized to ensure that participants feel comfortable and well cared for throughout the experience.

The outings typically include visits to Christian spiritual sites and scenic locations, followed by a shared meal where participants can enjoy fellowship and meaningful conversation. Transportation and all logistical arrangements are provided by Spread Life to ensure accessibility for elderly participants.

Beyond the trip itself, the program aims to restore a sense of dignity, belonging, and joy to those who often spend much of their time at home.

In 2025, Spread Life organized 12 Kazdoura outings, with approximately 7 elderly beneficiaries participating in each trip, creating memorable experiences of companionship, faith, and community.



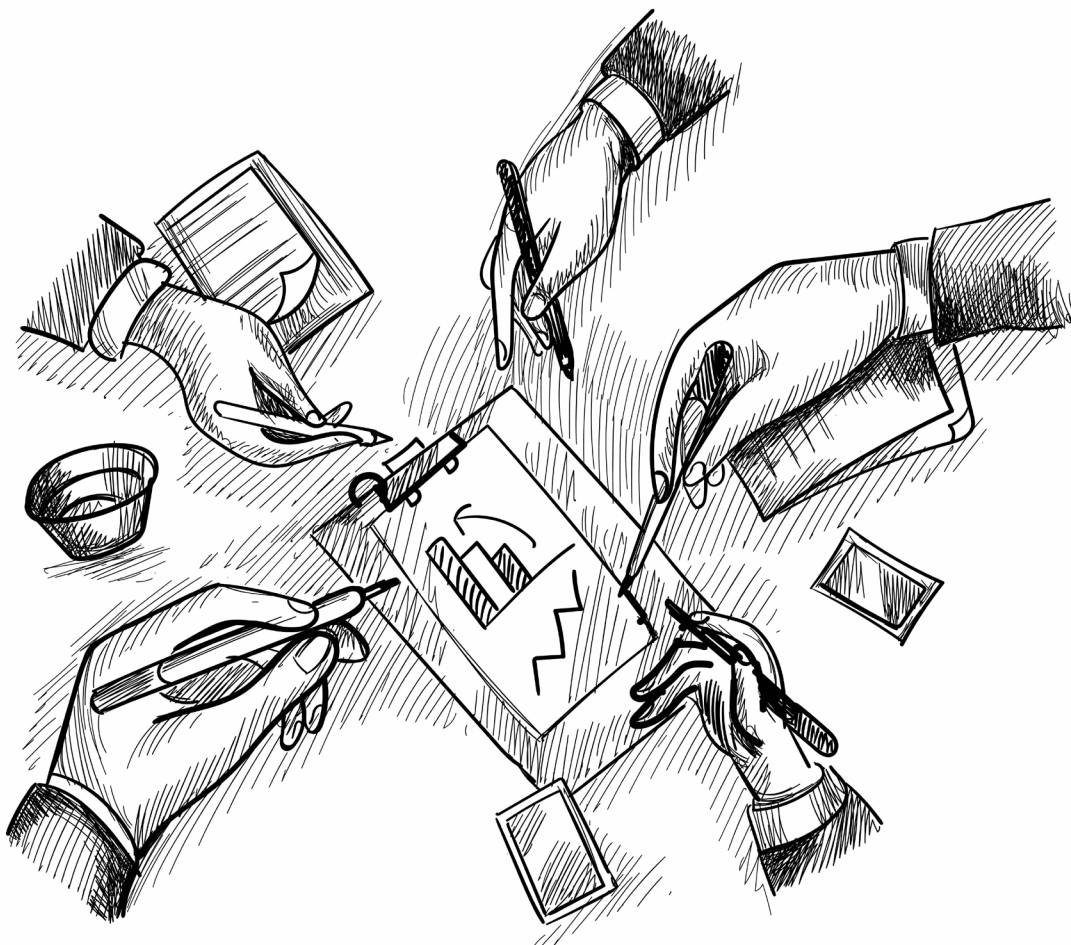
# Transparency & Governance

Spread Life is committed to maintaining the highest standards of transparency, accountability, and responsible stewardship. All beneficiary support is governed by clear internal procedures and digital systems that ensure fairness and proper oversight.

Decisions regarding patient assistance and beneficiary support are made through structured processes within our operational system, where **multiple team members are involved and dual control is applied**. No single individual has the authority to independently approve assistance. Even the Executive Director does not have the authority to approve a beneficiary, as responsibilities are clearly separated to ensure transparency and accountability.

Spread Life utilizes dedicated software systems to manage beneficiary records, program operations, and approvals, ensuring that all activities are properly documented and monitored throughout the process.

These safeguards help ensure that all support is delivered **fairly, responsibly, and in accordance with the organization's mission and values**.



# Growth & Sustainability

Over the past years, Spread Life has worked intentionally to build sustainable initiatives that strengthen the long-term impact of its mission. While charitable support remains essential, these initiatives help generate additional resources that allow the organization to expand its outreach and serve more families in need.

One important milestone in 2025 was the acquisition of a real estate property, made possible through the proceeds generated over the past five years from Spread Life's developmental initiatives, including Spread Wine, Spread Honey, and consultancy services. The property is now rented, creating a sustainable source of income that directly supports Spread Life's charitable programs.

In addition, Spread Life continues to develop partnerships that improve the efficiency of its services. During 2025, a new collaboration with a pharmacy supplier was established to ensure a reliable supply of medications for the patients served through the Medical Program.

Spread Life also began developing a Volunteer Hosting Initiative, designed to welcome individuals and groups who wish to visit Lebanon, learn more about the organization's work, and participate in service activities with the families we support. In 2025, we had the privilege of hosting a group of volunteers from United States & Germany, who spent time learning about Spread Life's operations and participating in a service day with our team.

Looking ahead, Spread Life is preparing to launch a new initiative in 2026 focused on engaging small donors and young people, allowing a broader community to participate in spreading hope and compassion to families in need.

Through these initiatives, Spread Life continues to strengthen both its mission and sustainability, ensuring that the work of serving vulnerable families can continue to grow in the years ahead.



# Events

15

## Easter Event



During the Easter season, Spread Life organized a special outreach in collaboration with the LAU School of Pharmacy. Together, we distributed Syriac Easter cookies and white cheese to 350 families, sharing the joy of the Resurrection and reminding families of God's love during this blessed time.

## Christmas Celebration

The Christmas celebration was held at Saint Aphrem Church Hall in Achrafieh, where more than 200 individuals from the families we serve gathered for a joyful evening.

The event included a warm Christmas dinner, music, and fellowship. Santa Claus joined the celebration, bringing gifts for both children and adults, creating a memorable and joyful experience for all attendees.



## 10-Year Anniversary Gala Dinner

A major highlight of the year was the Spread Life 10-Year Anniversary Gala Dinner, held in October 2025 at Le Royal Hotel, Dbayeh. The event brought together around 250 guests, including donors, partners, and supporters, to celebrate a decade of service and impact.





The Gala was an opportunity to present the journey of Spread Life—from its beginnings in October 2015 as a small initiative to a growing mission with six active programs in 2025, serving families across Lebanon.

**“Ten years of service, and this is only the beginning.”**

A special moment during the evening was the honoring of His Eminence Mor Klemis Daniel Kourieh, Metropolitan of Beirut for the Syriac Orthodox Church, in recognition of his continuous support for Spread Life since its early days.

The Gala Dinner played a key role in raising awareness about the mission, strengthening relationships with existing supporters, and welcoming new individuals to become part of the Spread Life journey.

## Ongoing **Community Engagement**

Spread Life continues to actively engage volunteers and partners throughout the year. The collaboration with the LAU School of Pharmacy remains ongoing, where students participate as part of their curriculum by supporting activities such as preparing pantry boxes and visiting families.

Spread Life also maintains a strong partnership with Bet Tarbitbo Lebanon through the organization of monthly prayer meetings held on the first Tuesday of each month at Saint Jacob Cathedral in Sabtiyye. Transportation is provided to families, allowing them to attend, worship, listen to spiritual messages, and participate in intercessory prayers.

In addition, Spread Life servants hold monthly internal meetings, where they review the conditions of the families served, assess their needs, and discuss ways to improve the quality and effectiveness of the service. These meetings also include a time of prayer, asking for God's guidance and the work of the Holy Spirit in sustaining the mission.

# Events



## Servants & Youth Engagement

Spread Life also invested in strengthening its servant community throughout the year.

In July 2025, Spread Life organized its Annual Retreat in Ehden, where servants gathered to reflect on the mission, plan for the year ahead, and align on priorities. The retreat also included moments of worship, spiritual reflection, and fellowship, providing both renewal and encouragement for those serving.

Furthermore, as part of the monthly prayer meetings held in collaboration with Bet Tarbitho, Spread Life formed a youth service group composed of young volunteers from Bet Tarbitho. This group actively supports the organization of the meetings and gathers once every quarter for fellowship, evaluation of their service, and planning for improvement.

These initiatives reflect Spread Life's commitment to building a strong, engaged, and spiritually rooted community of servants.



# Financials

With the grace of God, we successfully covered all expenditures in 2025. We extend heartfelt gratitude for your generous donations and for aligning with our mission to serve the community in Lebanon and spread the word of God. Below, we provide the income statement for the year 2025.

<b>Donations</b>	<b>USD 830,423.43</b>
<b>Developmental Projects</b>	<b>USD 28,273.5</b>
Medical Pogram	USD 378,557.13
Cash subsidies Program	USD 45,179.08
Educational Project	USD 42,855.85
Pantry Program	USD 41,924.42
Zahle Region Service	USD 36,856.62
Archdioceses Aid	USD 21,100.00
Kitchen Program	USD 18,451.38
Christmas Project	USD 8,699.52
Elderly Home Aid	USD 6,727.97
Bet Tarbitho - Monthly meeting	USD 6,180.56
General - One time aid	USD 5,185.87
Easter Project	USD 4,808.26
Care & Pray (Launched in 2025)	USD 3,438.55
Kazdoura (Launched in 2025)	USD 2,055.99
Bet Tarbitho - Aid	USD 2,000.00
Syriac Scouts Donations	USD 500.00
<b>Total</b>	<b>USD 624,521.20</b>
Operational Expenses	<b>USD 74,393.34</b>
Salaries & Wages	<b>USD 117,300.00</b>
Other Financial Charges (Bank, Taxes Exchange...)	<b>USD 25,464.04</b>
<b>Total Expenses</b>	<b>USD 217,157.38</b>
<b>Net Operating Income</b>	<b>USD 17,018.35</b>

فیزہ کا  
منا

